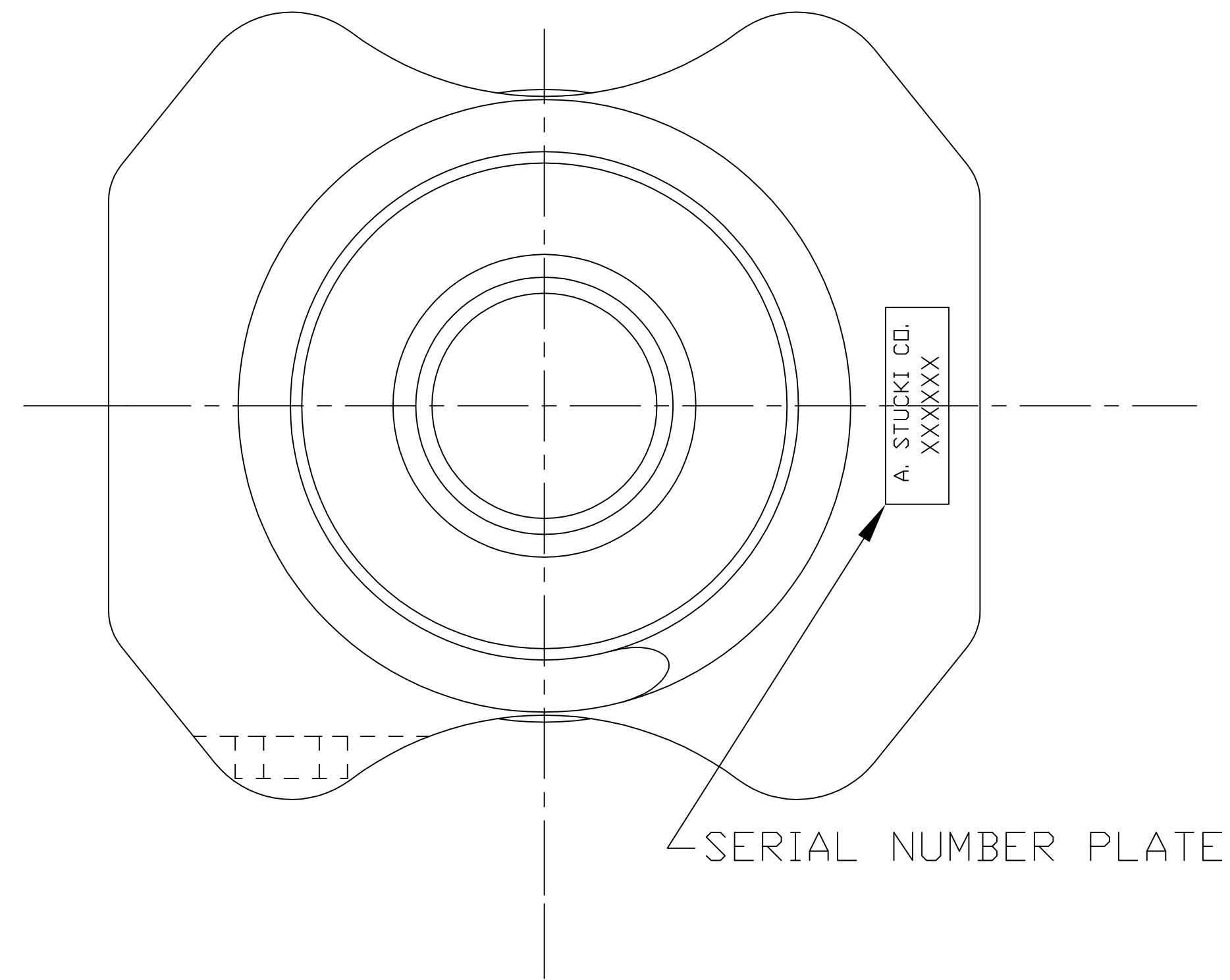


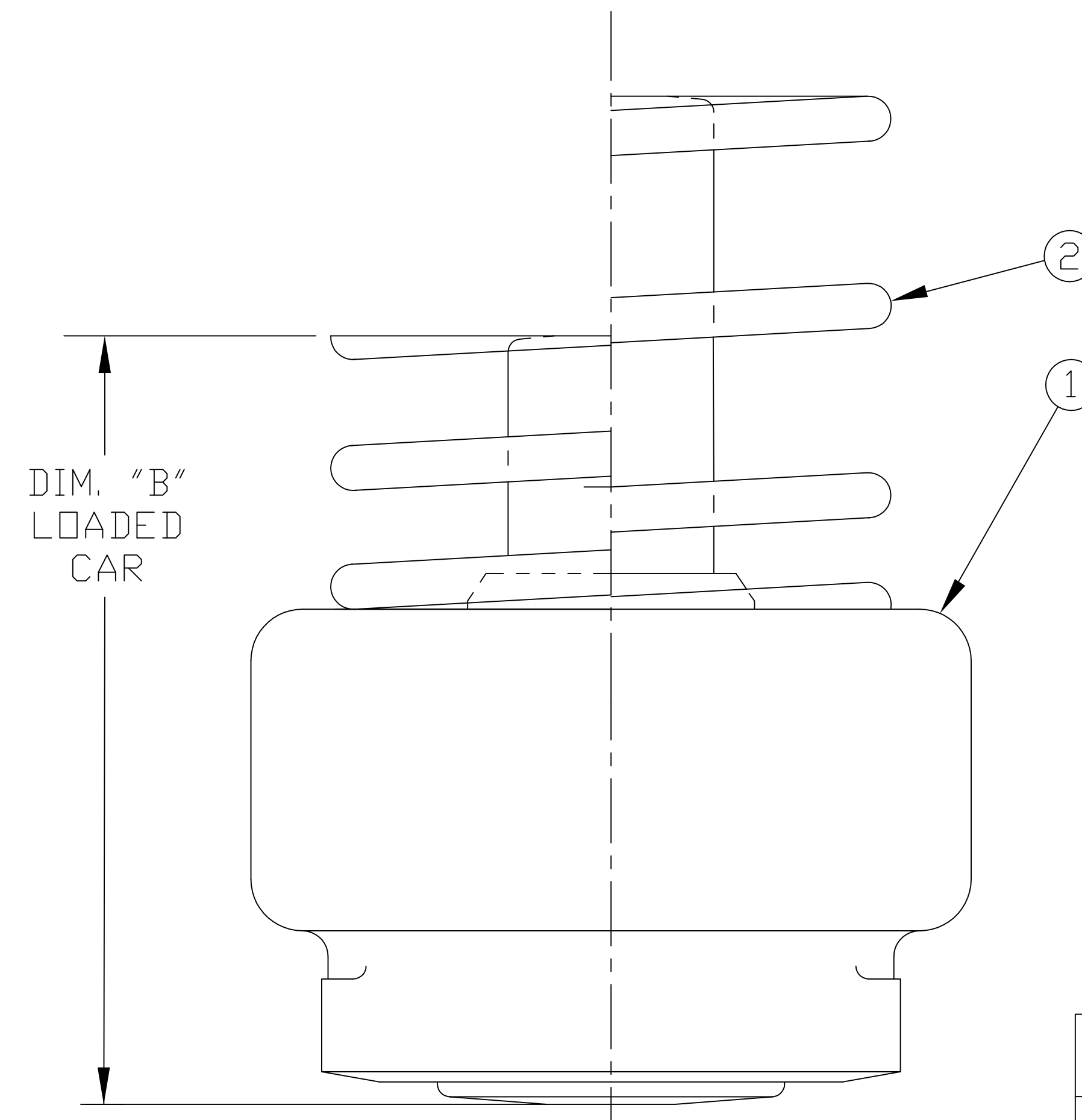
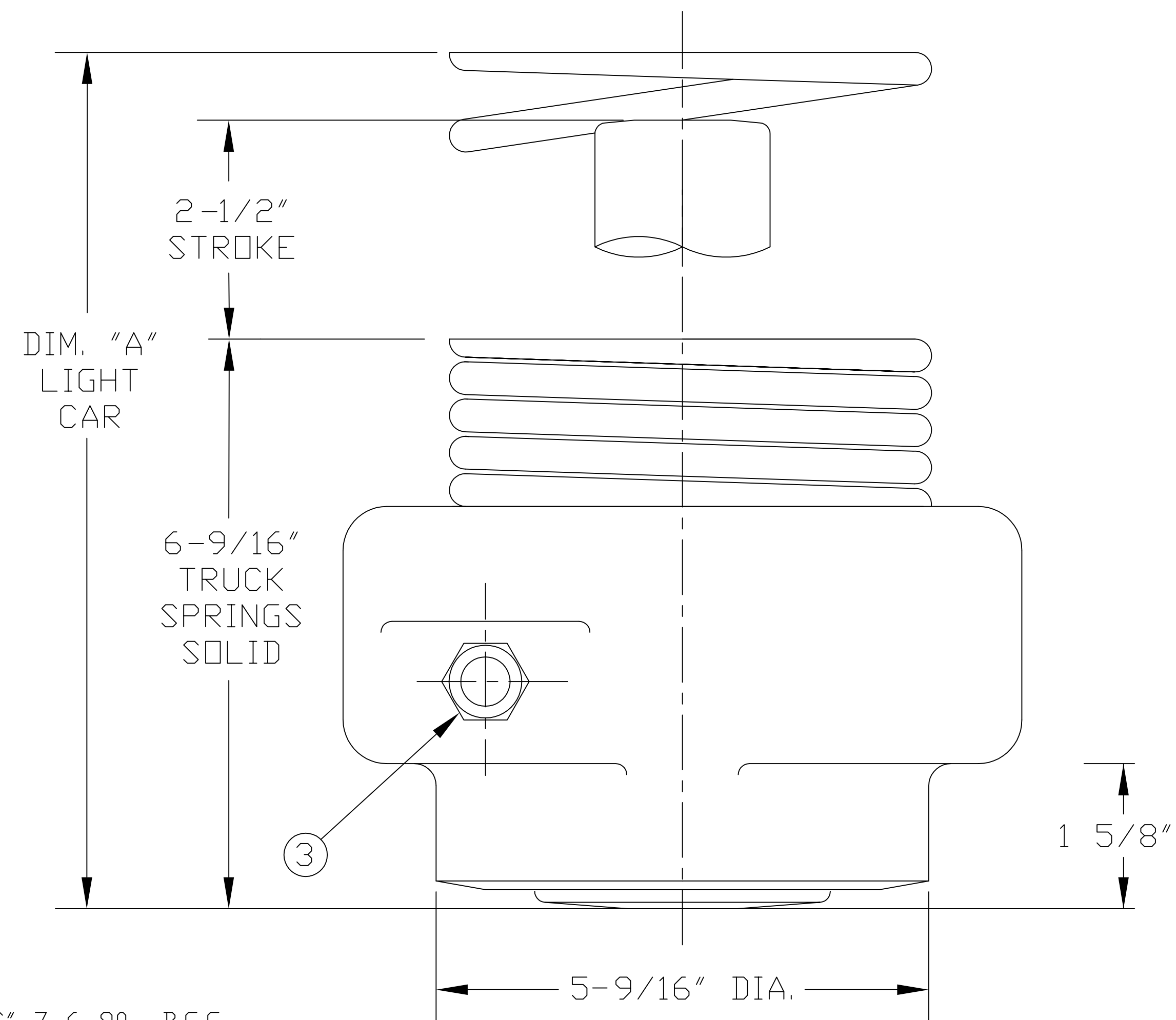
DIMENSIONS "A" AND "B" ARE DETERMINED BY THE SPRING GROUP ARRANGEMENT. TYPICAL SPRING GROUPS AND CORRESPONDING HEIGHT FOR 100 TON CARS ARE LISTED ON DRAWINGS SA-A-02239-A AND SA-A-02240-A. OTHER ARRANGEMENTS AVAILABLE UPON REQUEST.



PARTS DESCRIPTION

- ① HS-7-100 STABILIZER BODY
- ② BODY SPRING
- ③ SIGHT WINDOW - RESERVE OIL INDICATOR

WEIGHT (COMPLETE) - 30.5 LBS.



A. STUCKI CO.	
HS-7-100 RIDE STABILIZER	
3-22-79	SA-0-02344-A