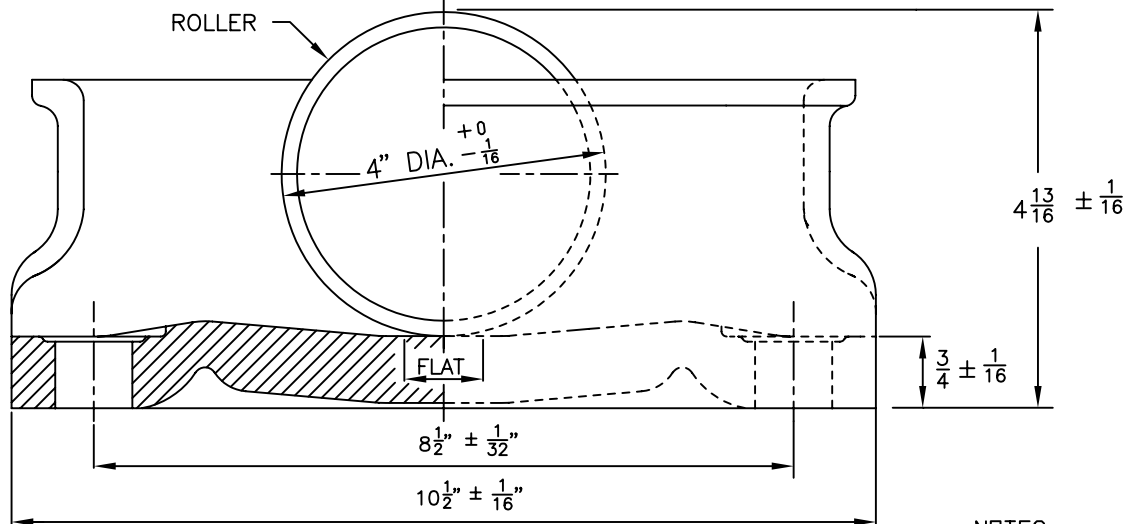
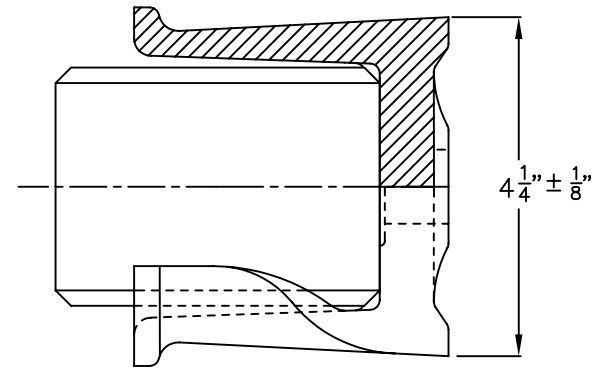
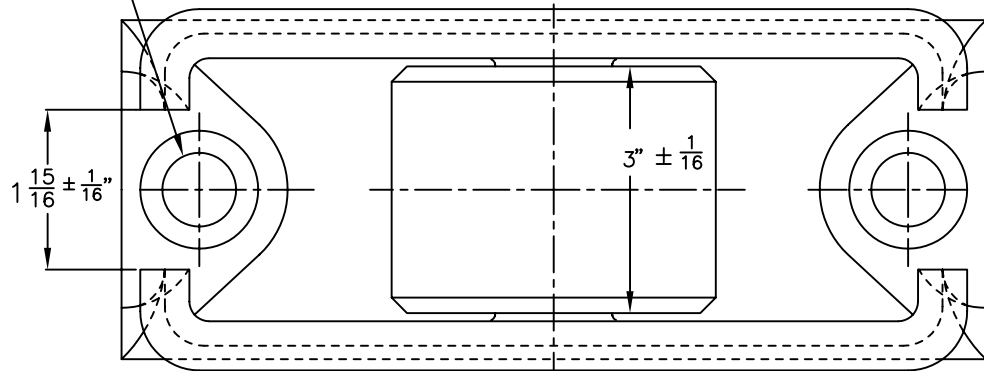


$\frac{15}{16}$  NOM. DIA. HOLES -  $\frac{7}{8}$  DIA. FASTENER, MAXIMUM CLAMPING FORCE MUST NOT EXCEED 30,000 LBS. PER FASTENER.



ROLLER & CAGE  
HIGH CARBON ROLLED STEEL  
MILL VARIATIONS ALLOWED

NOTES:  
CAGE BOTTOM FLATNESS  
MEETS A.A.R. SPEC.  
S-3013, FIG. 29-B

A. STUCKI CO.	
TRUCK SIDE BEARING	
1-6-69	08254