

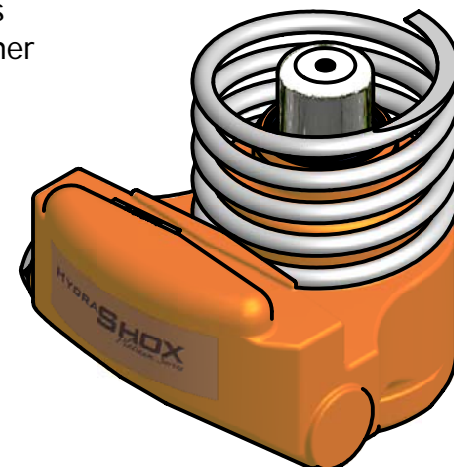
2



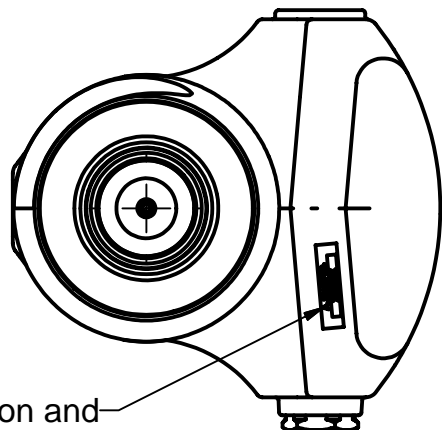
1

Dimensions "A" and "B" are determined by the spring group arrangement. Typical spring groups and corresponding height for 100 ton cars are listed on drawings SA-A-02170-A and SA-A-02171-A. Other arrangements available upon request.

Weight (complete) = 30.5 lb.

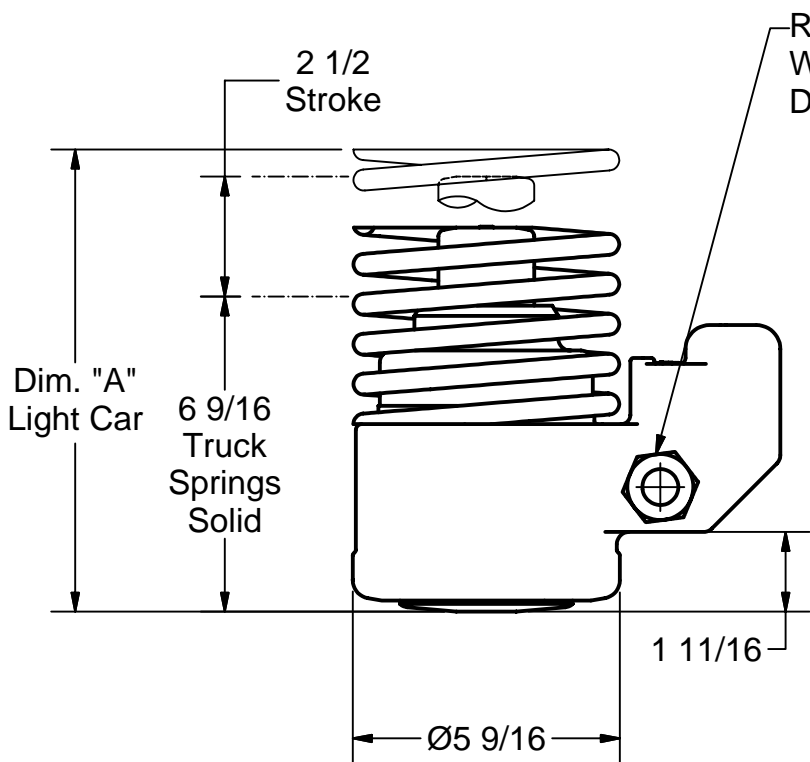


B

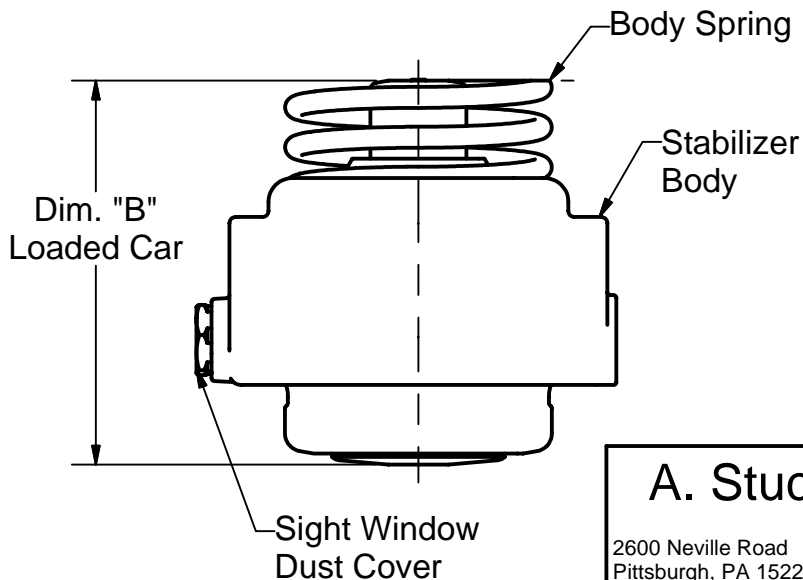


Model Identification and Serial Number Plate

B



Reserve Oil Inspection Window, Shown with Dust Cap Removed



A

A

A. Stucki Company

2600 Neville Road
Pittsburgh, PA 15225

412.771.7300
www.stucki.com

TITLE

HydraShox Platinum

DRAWN	DATE	CONTROL	DRAWING NUMBER	REV
VVB	06/15/07	S	08129	001
REVISED				

2



1