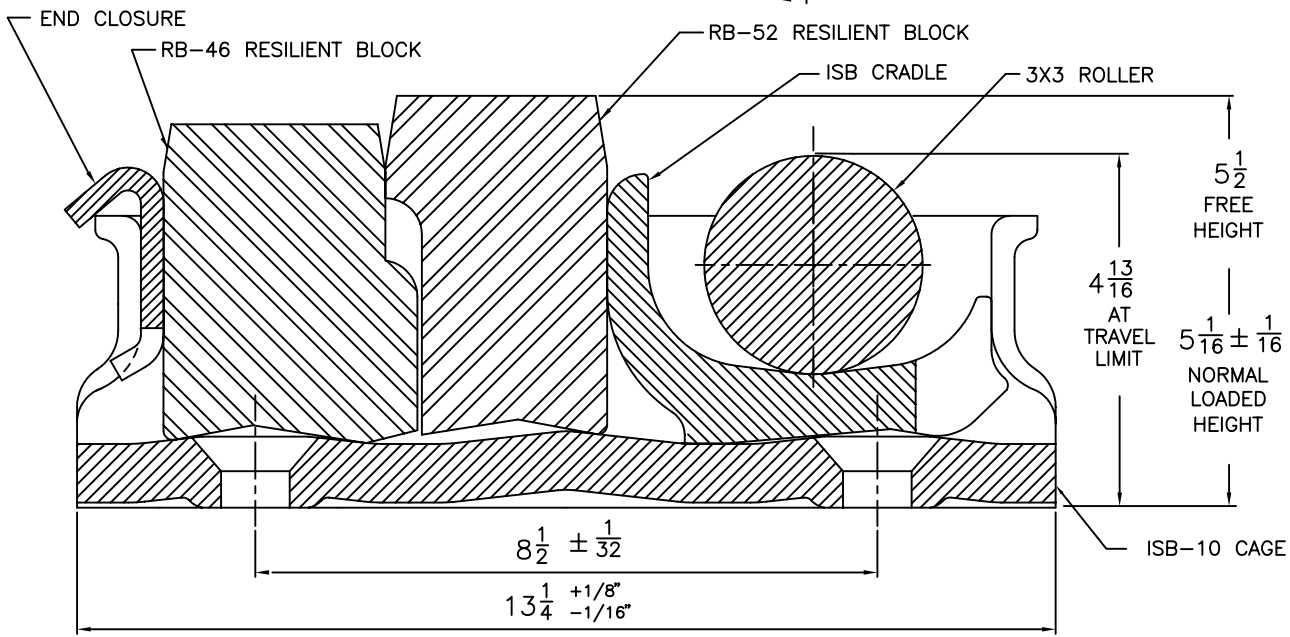
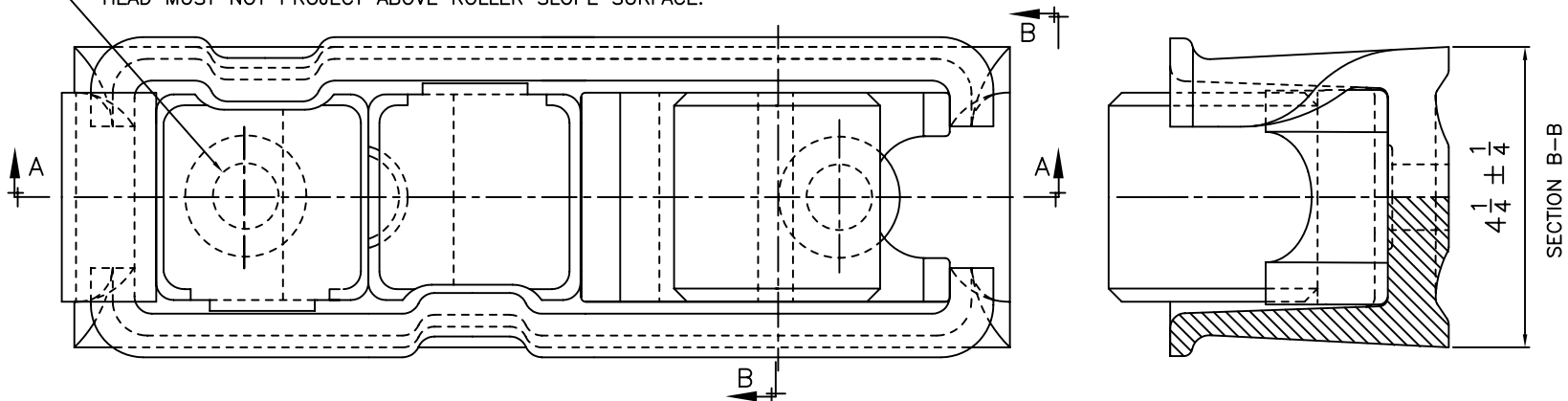


15/16 NOM. DIA. HOLES FOR 7/8 DIA. COUNTERSUNK FASTENER. MAXIMUM CLAMPING FORCE MUST NOT EXCEED 35,000 LBS. PER FASTENER. HEAD MUST NOT PROJECT ABOVE ROLLER SLOPE SURFACE.



- NOTES:
1. FORCE AT 5 1/16 = 4,500 LBS. PER SIDE BEARING. (AT 75° F, AFTER INITIAL RELAXATION)
 2. MEETS REQUIREMENTS OF M-948-77 WHEN INSTALLED IN CARS WITH MINIMUM CARBODY WT. 21,180 LBS.
 3. IN NORMAL OPERATION, NEITHER LONGITUDINAL OR LATERAL MOTION IS IMPEDED BY SOLID STOPS.

CAGE BOTTOM FLATNESS
MEETS A.A.R. SPEC.
S-3013, FIG. 29-B

ROLLER & CAGE
HIGH CARBON ROLLED STEEL
MILL VARIATIONS ALLOWED

* - MUST BE INSTALLED IN ACCOR-
DANCE WITH, "INSTALLATION
INSTRUCTION FOR STUCKI ISB-9DRL
RESILIENT SIDE BEARINGS".

A. STUCKI CO.	
ISB-9DRL SIDE BEARING	
12-17-98	08086