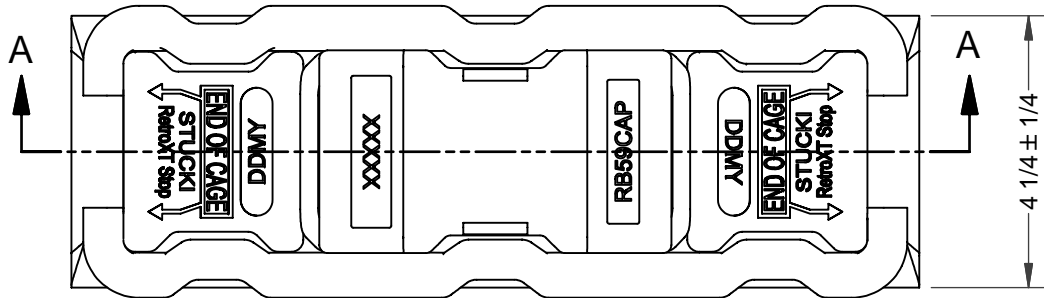


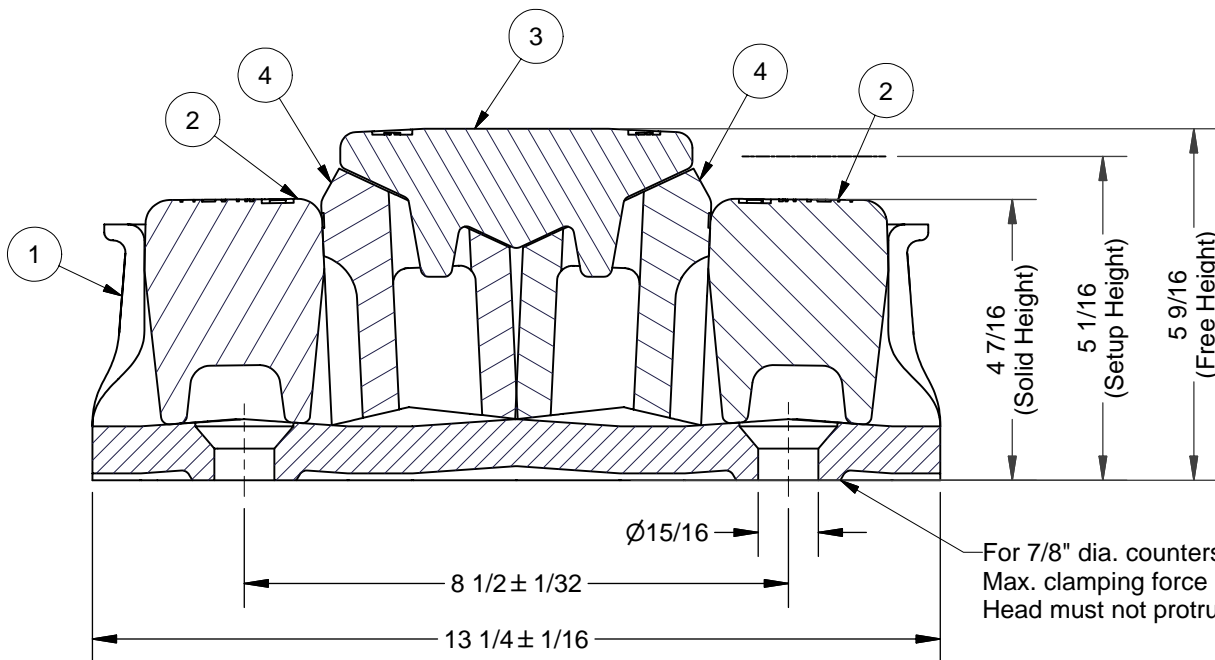
2

1



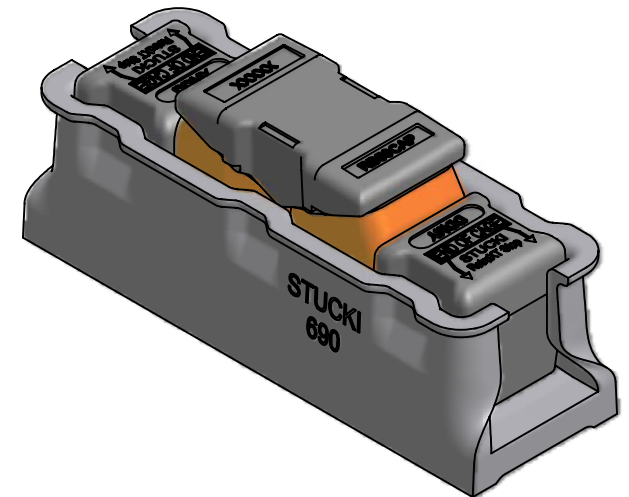
Notes:

1. Force at $5 \frac{1}{16}$ " = 4500 lb. per side bearing (at 75°F, at initial relaxation).
2. Meets requirements of M-948 when installed on cars with a minimum car body weight of 21,176 lb.
3. Must be installed in accordance with *Installation Instructions for Stucki RetroXT 4500 Side Bearings*.



SECTION A-A

For $7/8$ " dia. countersunk fasteners.
Max. clamping force not to exceed 35,000 lb. per fastener.
Head must not protrude above cage floor.



Parts List

Item	Qty.	Description	Order Part No	Eng Dwg No
1	1	690 Cage	690CAGE	04861
2	2	RetroXT Stop	RETROXTSTOP	07338
3	1	RB-59 Wear Cap	RB59CAP	07906
4	2	RB-59 Resilient Block	RB59	07905

A. Stucki Company

2600 Neville Road
Pittsburgh, PA 15225

412-771-7300
www.stucki.com

TITLE

RetroXT 4500 Side Bearing

DRAWN	DATE	CONTROL	DRAWING NUMBER	REV
WRS	10/16/06 REVISED 8/14/07	S	07917	002