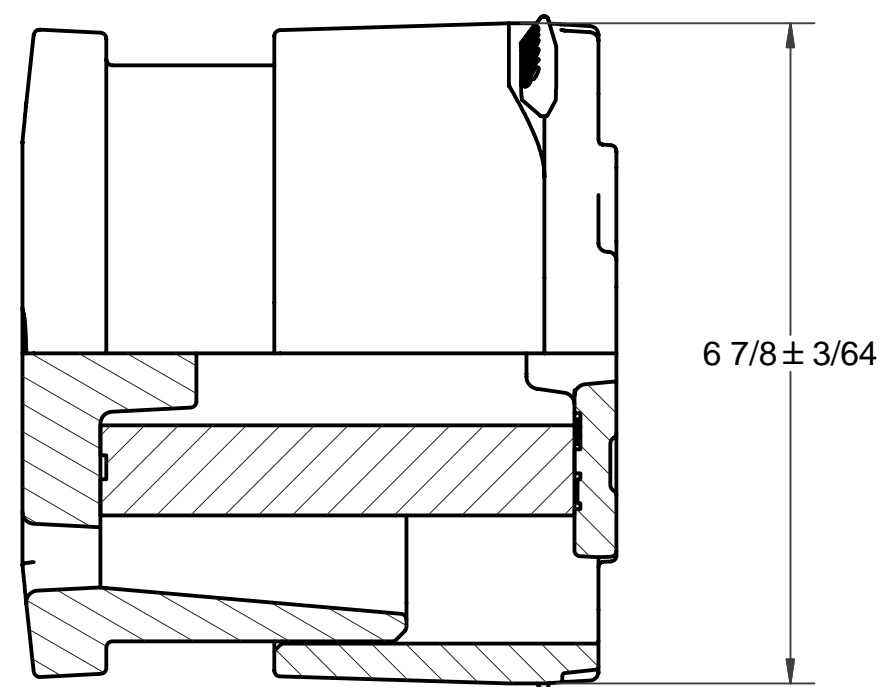
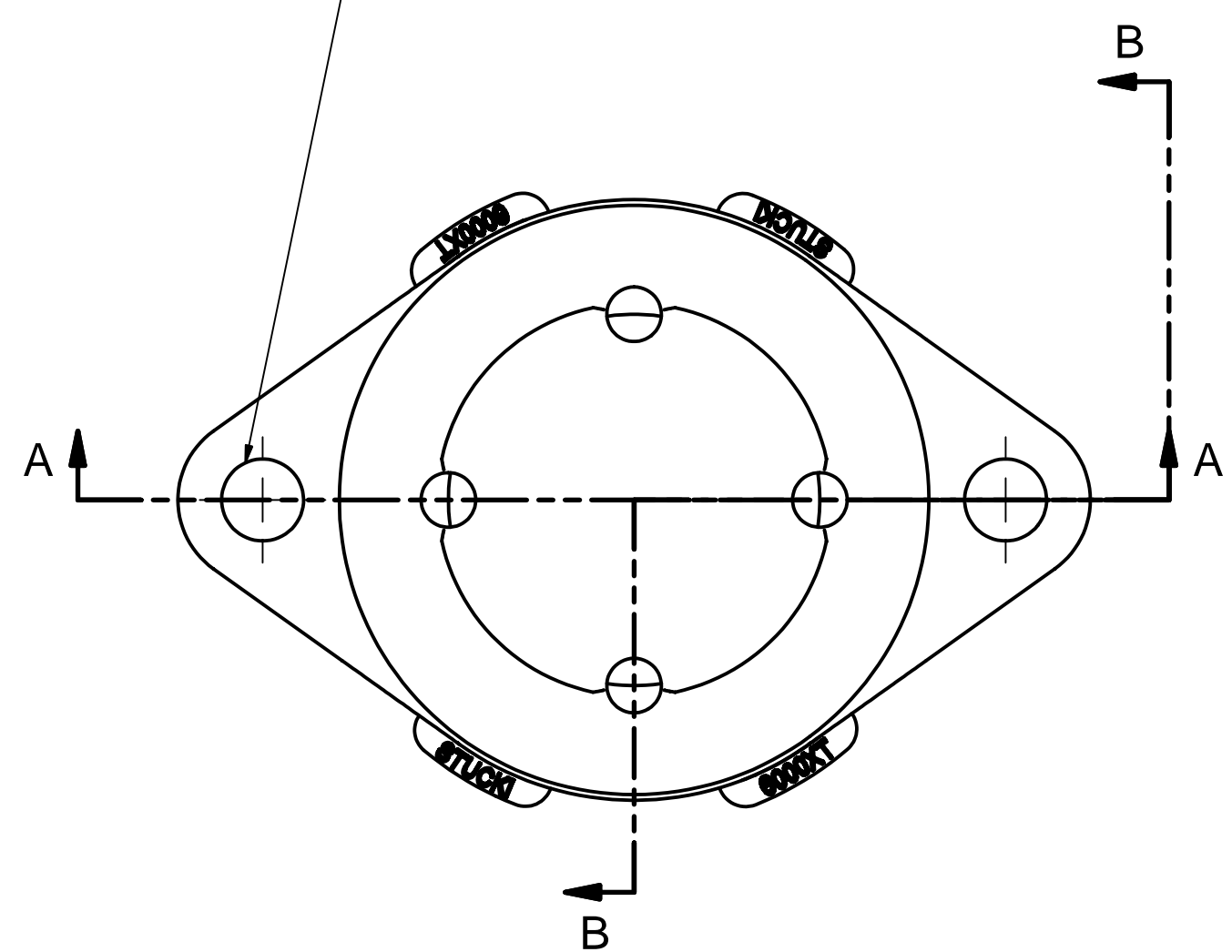
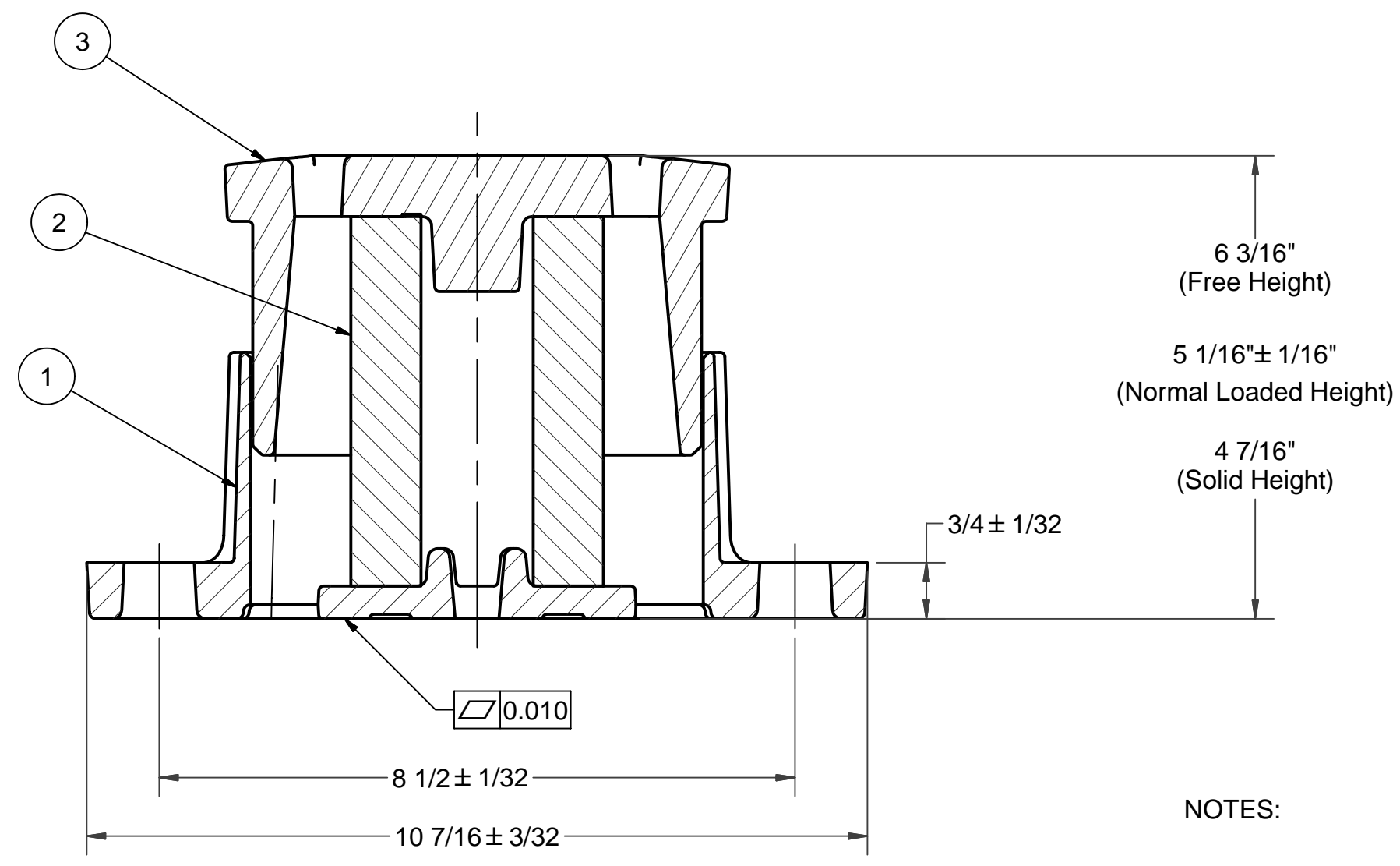
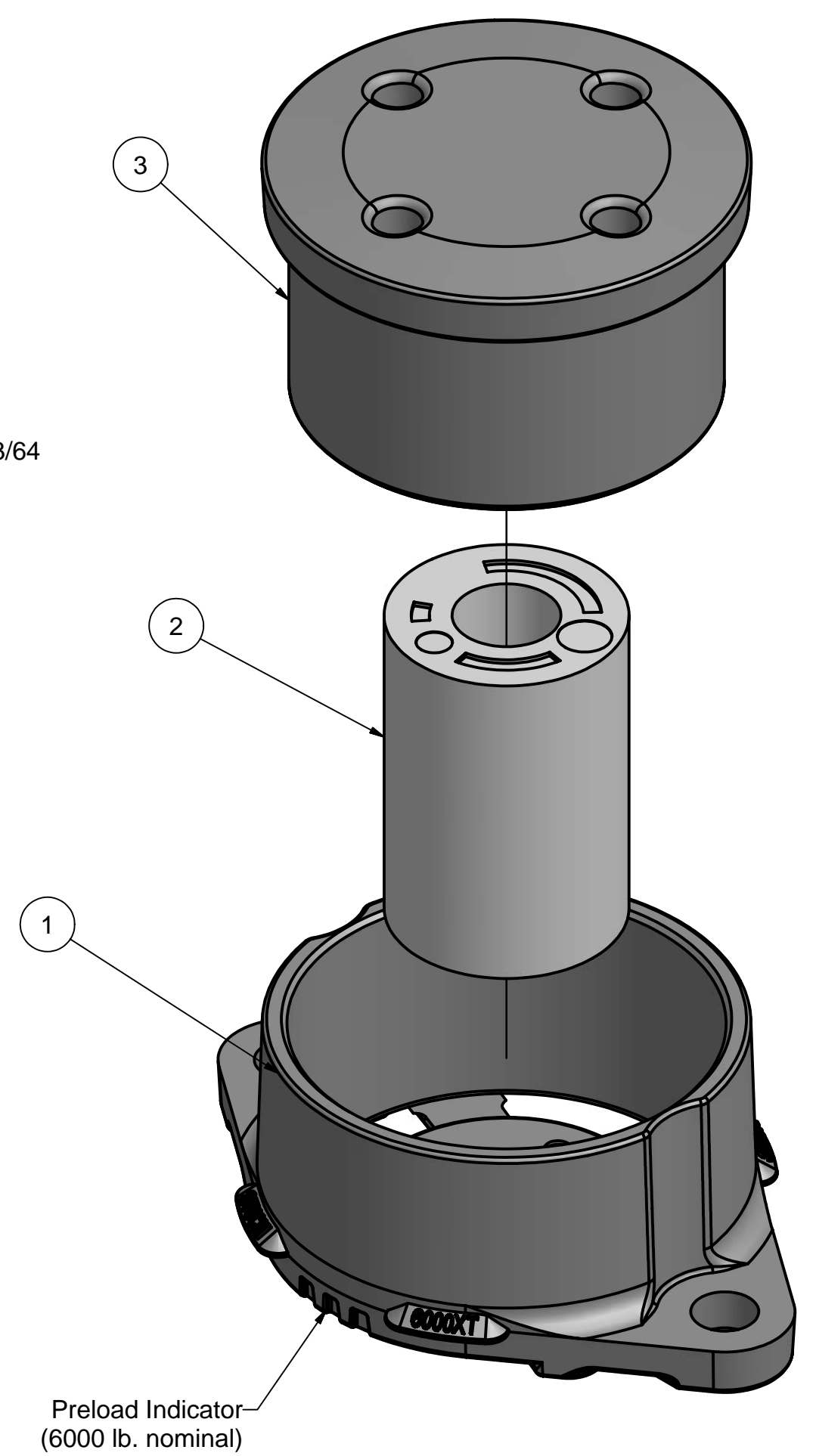


Ø15/16" nominal holes for 7/8" fastener.  
Maximum clamping force must not exceed 30,000 lb. for fastener.



SECTION B-B



SECTION A-A

NOTES:

- Force at 5 1/16" = 6000 lb. per side bearing (at 75°F after initial relaxation).
- Meets requirements of M-948 when installed on cars with minimum car body weight of 28,235 lb.
- In normal operation, lateral and longitudinal motion is limited to 1/32" by solid stops.
- Must be installed in accordance with *Installation Instructions for Stucki CSB Resilient Side Bearings.*

PARTS LIST			
ITEM	ORDER PART NO.	DESCRIPTION	ENG. DWG NO.
1	6000XTCAGE	6000XT Side Bearing Cage	07746
2	CSBCOLUMN	CSB® Column	07594
3	CSBCAP	Column Side Bearing Cap	07297

**A. Stucki Company**  
Division of Hansen Inc.

2600 Neville Road  
Pittsburgh, PA 15225

412-771-7300  
www.stucki.com

---

**CSB-6000XT Side Bearing**

DRAWN	DATE	CONTROL	DRAWING NUMBER	REV
VVB	10/26/05	S	07865	001