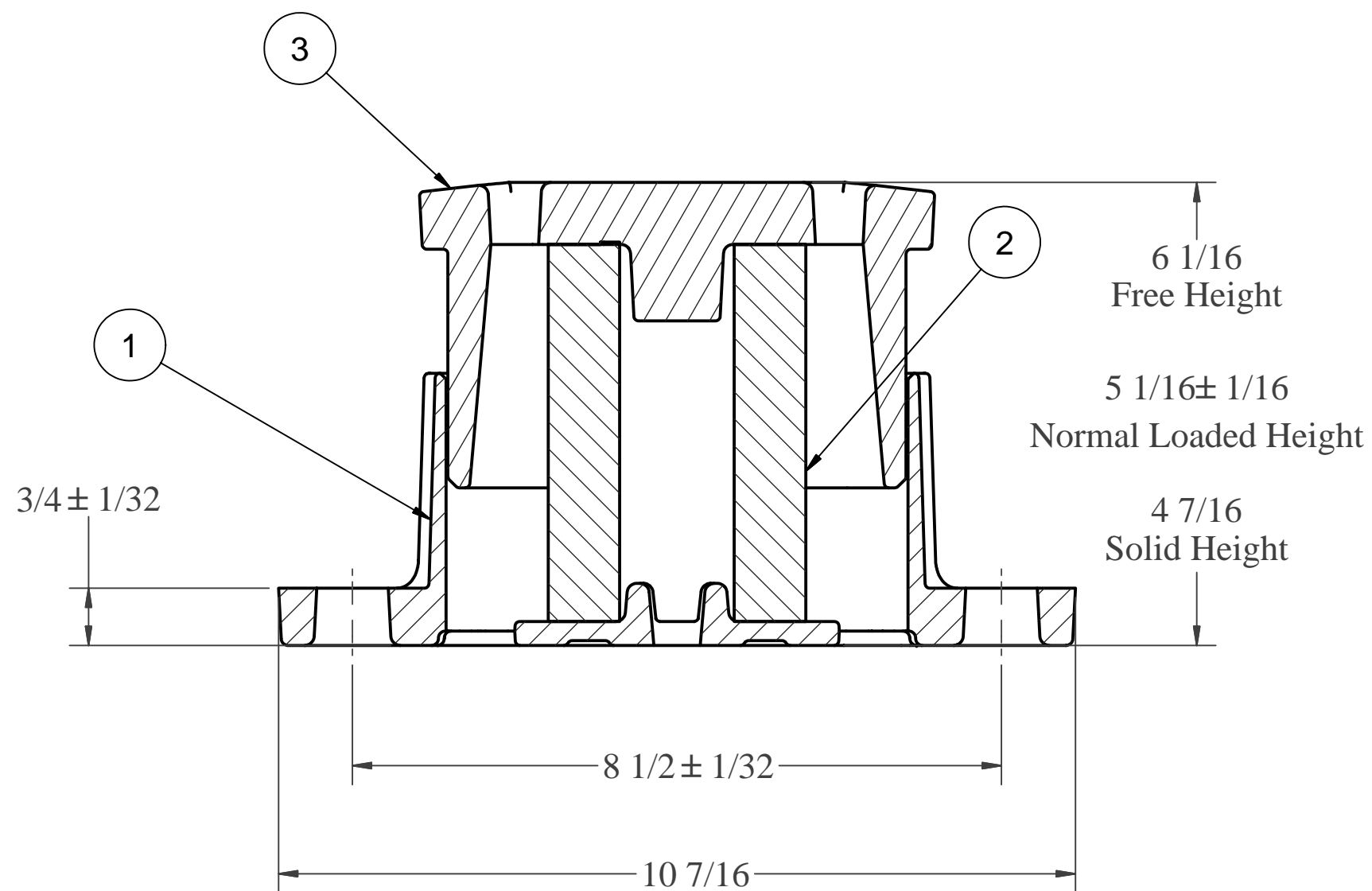
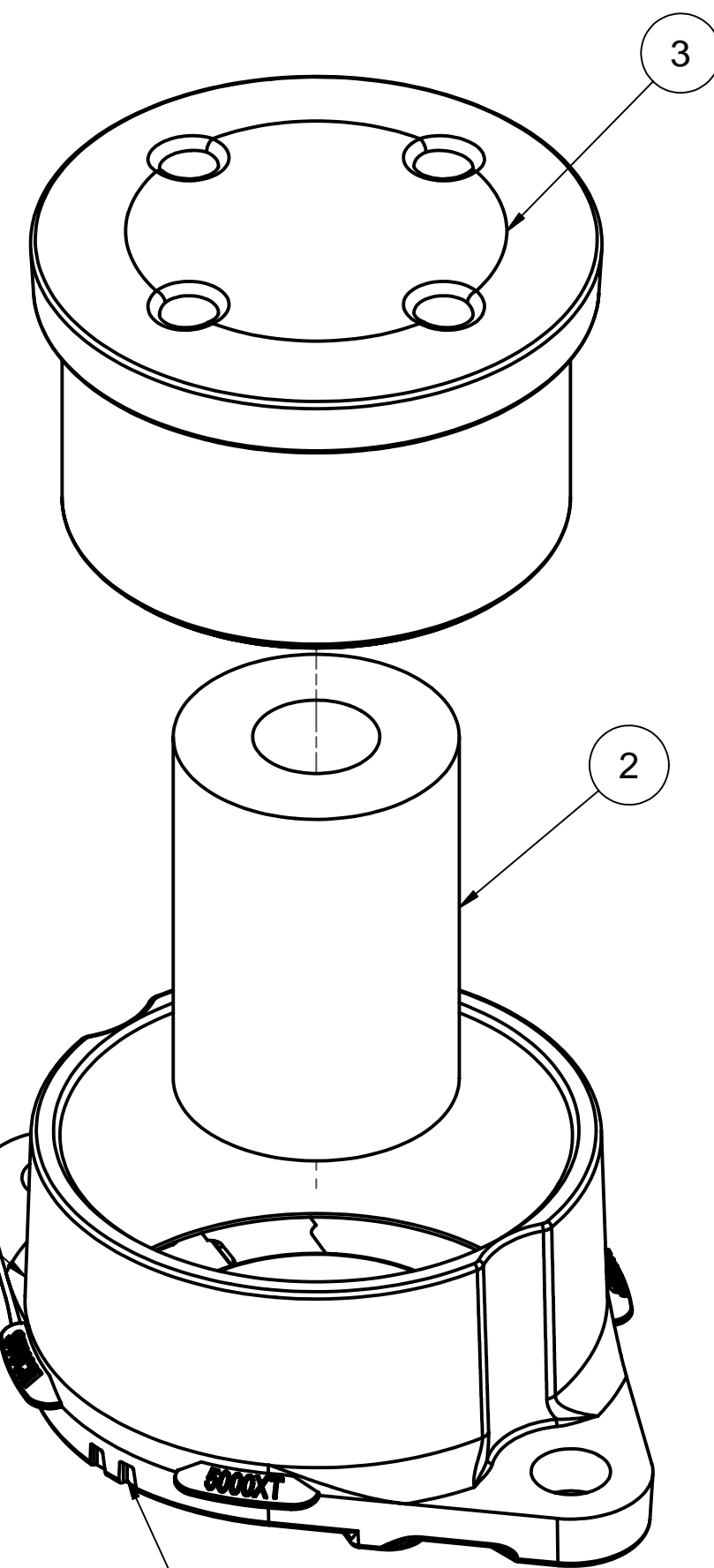


SECTION B-B



SECTION A-A

NOTES:

1. Force at 5-1/16" = 5100 LBS. per side bearing (at 75°F after initial relaxation).
2. Meets requirements of M-948-77 when installed on cars with minimum car body weight of 24,000 LBS.
3. In normal operation, lateral and longitudinal motion is limited to 1/32" by solid stops.
4. Must be installed in accordance with *Installation Instructions for Stucki CSB® Resilient Side Bearings.*

A. Stucki Company

Division of Hansen Inc.

2600 Neville Road
Pittsburgh, PA 15225

412-771-7300
www.stucki.com

CSB-5000XT® Side Bearing

Parts List			
ITEM	ORDER PART NO.	DESCRIPTION	ENG. DRAWING NO.
1	5000XTCAGE	5000XT Cage	07490
2	CSBCOLUMN	CSB® Column	07594
3	CSBCAP	Column Side Bearing Cap	07297

DRAWN	DATE	CONTROL	DRAWING NUMBER	REV
VVB	07/27/04	S	07599	002
	REVISED 11/19/04			