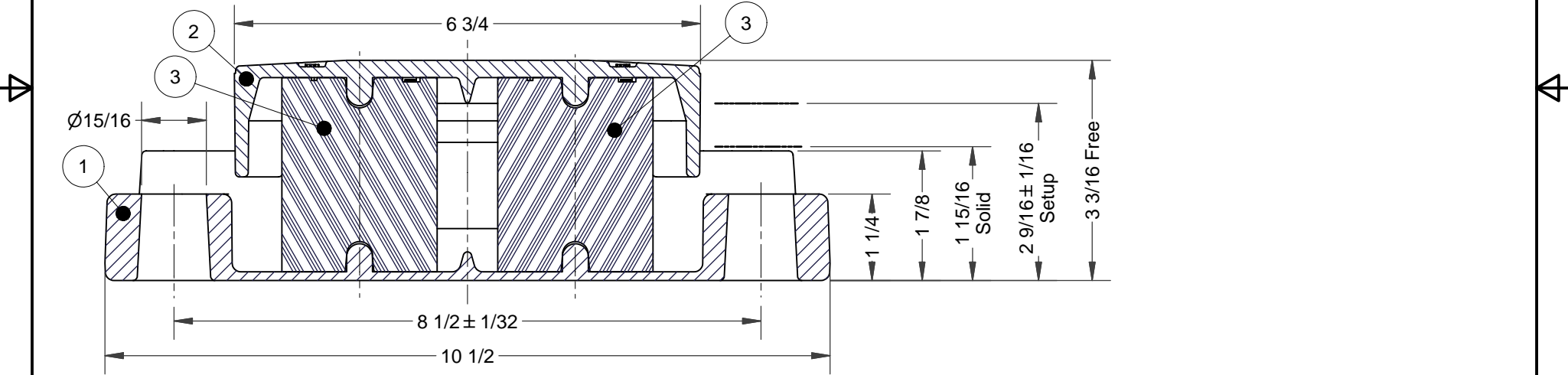


Ø 15/16" nominal holes for 7/8" fasteners.
 Max. clamping force must not exceed 30,000 lb for fastener.
 Hex hex bolts or washers cannot be used on side bearing side.



SECTION A-A

- Notes:
1. Force at 2 9/16" = 4500 Lb per side bearing (at 75° F after initial relaxation).
 2. Meets requirements of M-948-77 when installed on cars with a minimum car body weight of 21,176 lb.
 3. Must be installed in accordance with *Installation Instructions for Stucki RetroXT LP Bolt On Side Bearings*.

Parts List				
Item	Qty Needed	Description	Order Part No	Eng Dwg No
1	1	RetroXT LP Bolt On Base	RETROXT-LP-BOLT-ON-BASE	07569
2	1	RetroXT Cap	RETROXT-CAP	07566
3	2	RB-57 Column	RB57	07567

A. Stucki Company
 Division of Hansen Inc.
 2600 Neville Road
 Pittsburgh, PA 15225
 412-771-7300
 www.stucki.com

TITLE
RetroXT LP Bolt On Side Bearing

DRAWN JJD	DATE 7/13/04	CONTROL S	DRAWING NUMBER 07563	REV 002
--------------	-----------------	--------------	-------------------------	------------