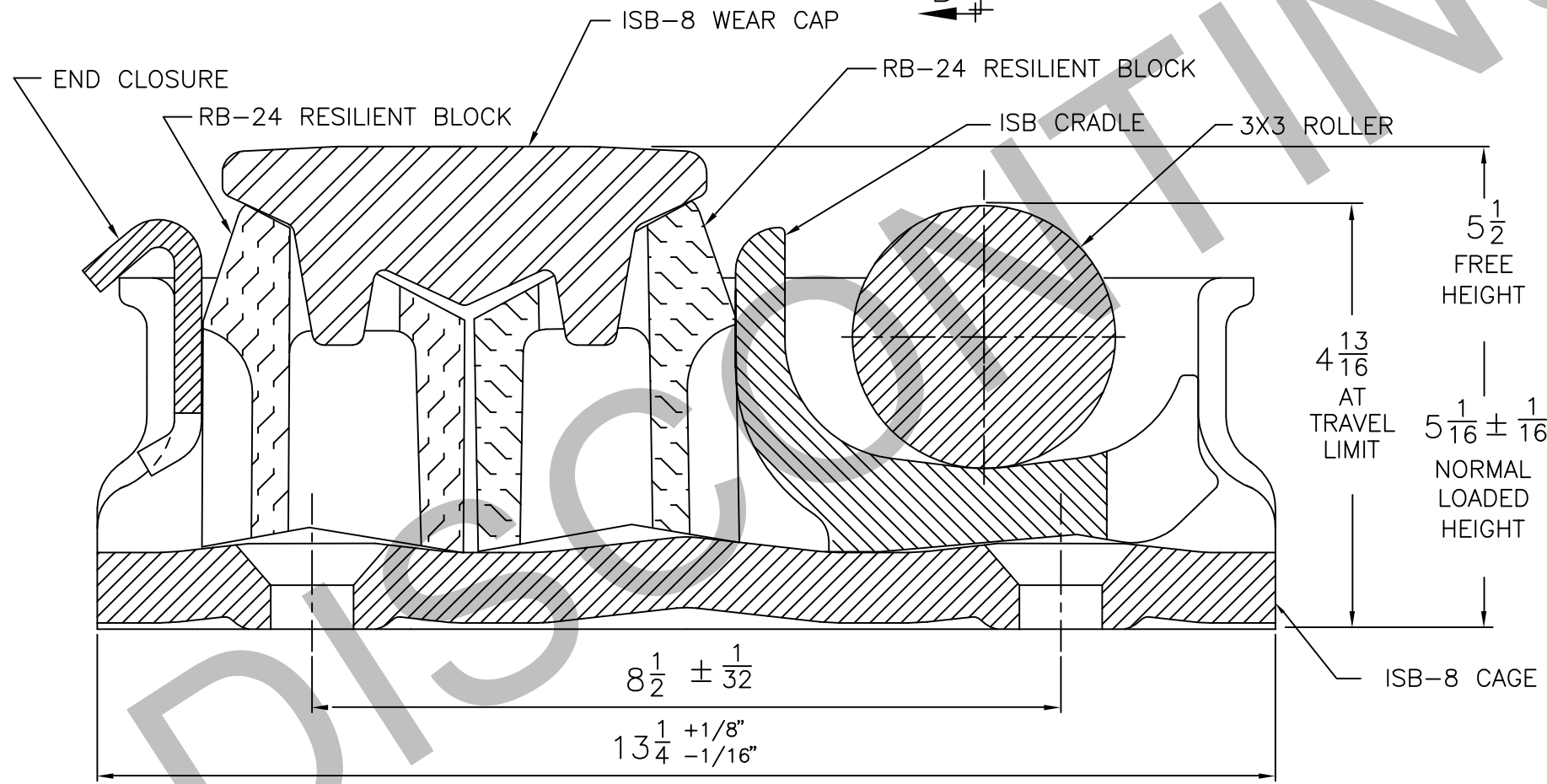
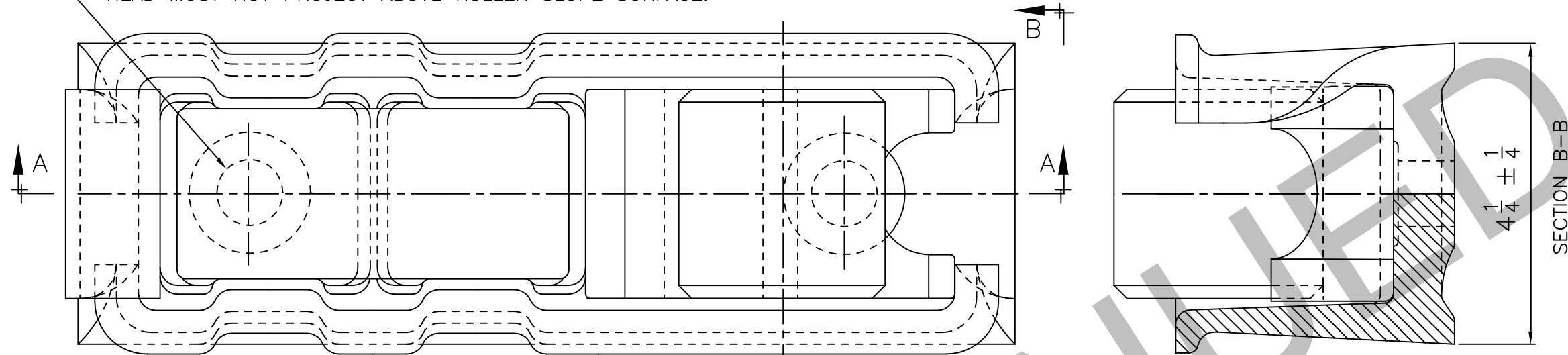


15/16 NOM. DIA. HOLES FOR 7/8 DIA. COUNTERSUNK FASTENER. MAXIMUM CLAMPING FORCE MUST NOT EXCEED 35,000 LBS. PER FASTENER. HEAD MUST NOT PROJECT ABOVE ROLLER SLOPE SURFACE.



NOTES:

1. FORCE AT 5 1/16 = 3,000 LBS. PER SIDE BEARING. (AT 75° F, AFTER INITIAL RELAXATION)
2. MEETS REQUIREMENTS OF M-948-77 WHEN INSTALLED IN CARS WITH MINIMUM CARBODY WT. 14,120 LBS.
3. IN NORMAL OPERATION, NEITHER LONGITUDINAL OR LATERAL MOTION IS IMPEDED BY SOLID STOPS.
4. LATERAL MOTION IS LIMITED TO 1/8 BY SOLID STOPS.
5. ON STAND ALONE CARS AND END TRUCKS ONLY ON ARTICULATED CARS, IT IS RECOMMENDED THAT ROLLERS BE ORIENTED DIAGONALLY OPPOSED ACROSS TRUCK BOLSTER. REFER TO STUCKI DRAWING NO. SA-A-04943-A

SECTION A-A

CAGE BOTTOM FLATNESS MEETS A.A.R. SPEC. S-3013, FIG. 29-B

ROLLER & CAGE HIGH CARBON ROLLED STEEL MILL VARIATIONS ALLOWED

* - MUST BE INSTALLED IN ACCORDANCE WITH, "INSTALLATION INSTRUCTION FOR STUCKI ISB-8 RESILIENT SIDE BEARINGS".

A. Stucki Company

Division of Hansen Inc.

2600 Neville Road
Pittsburgh, PA 15225

412-771-7300
www.stucki.com

TITLE

ISB-8 Side Bearing

DRAWN	DATE	CONTROL	DRAWING NUMBER	REV
JJD	8/1/02	S	07190	001
	REVISED			