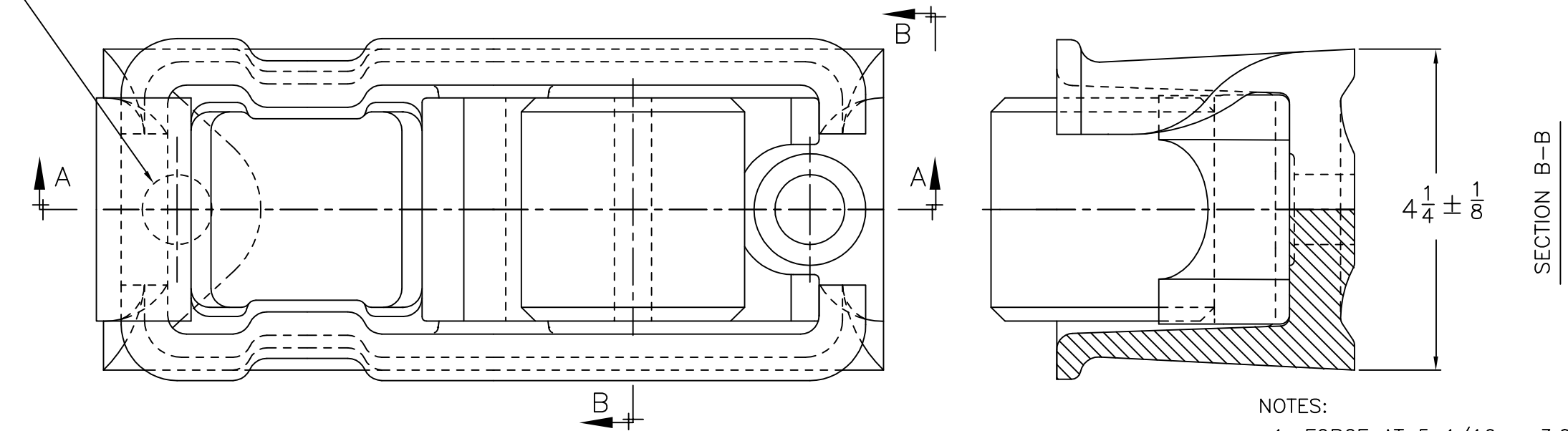
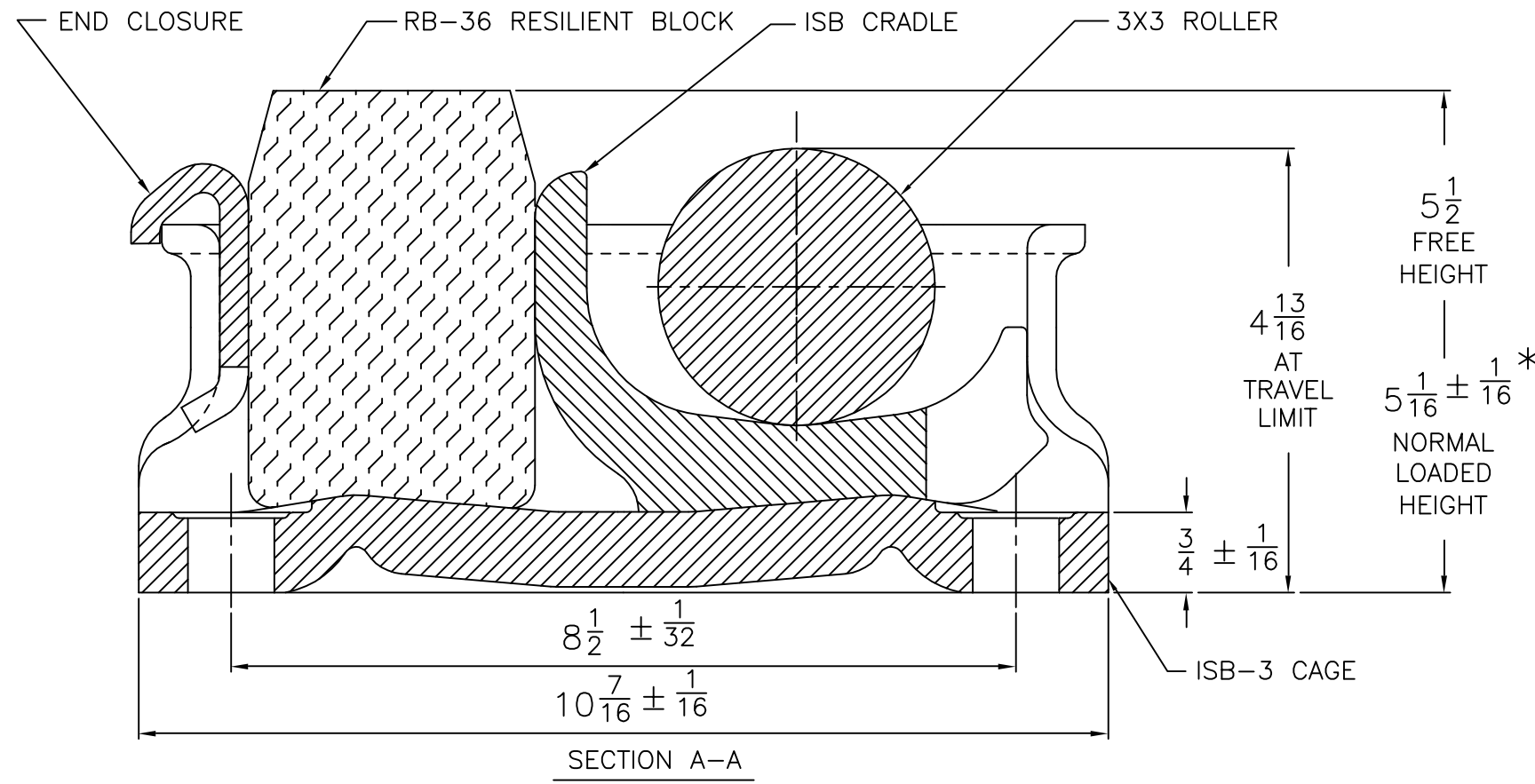


15/16 NOM. DIA. HOLES FOR 7/8 DIA. FASTENER. MAXIMUM CLAMPING FORCE MUST NOT EXCEED 30,000 LBS. PER FASTENER.



NOTES:

1. FORCE AT 5 1/16 = 3,000 LBS. PER SIDE BEARING. ( AT 75° F, AFTER INITIAL RELAXATION )
2. MEETS REQUIREMENTS OF M-948-77 WHEN INSTALLED IN CARS WITH MINIMUM CARBODY WT. 14,120 LBS.
3. IN NORMAL OPERATION, NEITHER LONGITUDINAL OR LATERAL MOTION IS IMPEDED BY SOLID STOPS.
4. WHEN SET UP TO 5 1/16 ± 1/16 , PROJECTIONS ON CORNERS OF RB-36 BLOCK WILL BE ALIGNED WITH TOP OF ISB-3 CAGE RAILS.
5. LATERAL MOTION IS LIMITED TO 1/8 BY SOLID STOPS.
6. ON STAND ALONE CARS AND END TRUCKS ONLY ON ARTICULATED CARS, IT IS RECOMMENDED THAT ROLLERS BE ORIENTED DIAGONALLY OPPOSED ACROSS TRUCK BOLSTER. REFER TO STUCKI DRAWING NO. SA-A-04943-A



CAGE BOTTOM FLATNESS  
MEETS A.A.R. SPEC.  
S-3013, FIG. 29-B

ROLLER & CAGE  
HIGH CARBON ROLLED STEEL  
MILL VARIATIONS ALLOWED

\* - MUST BE INSTALLED IN ACCOR-  
DANCE WITH, "INSTALLATION  
INSTRUCTION FOR STUCKI ISB-3  
RESILIENT SIDE BEARINGS".

**A. Stucki Company**

Division of Hansen Inc.

2600 Neville Road  
Pittsburgh, PA 15225

412-771-7300  
www.stucki.com

TITLE

**ISB-3 Side Bearing**

DRAWN  
JJD

DATE  
8/1/02  
REVISED

CONTROL  
S

DRAWING NUMBER  
07189

REV  
001