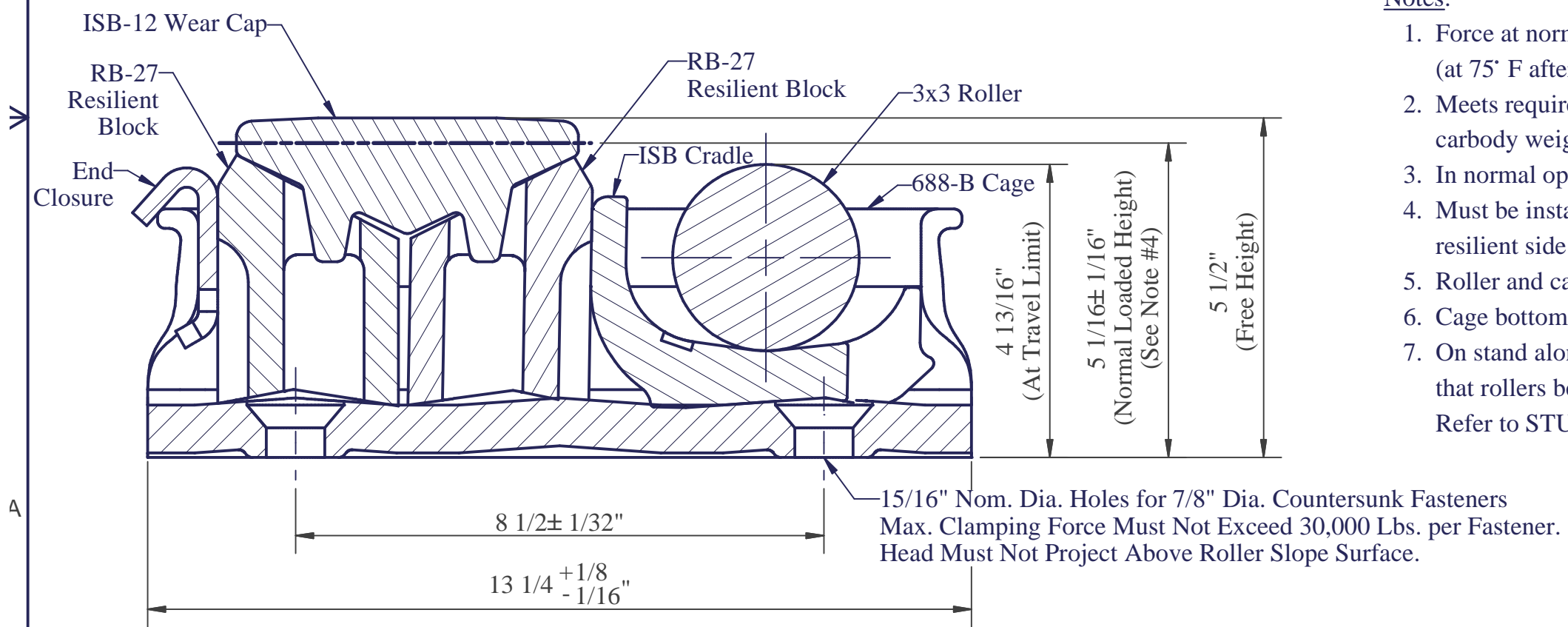


SECTION C-C

Notes:

1. Force at normally loaded height of $5 \frac{1}{16}$ " = 5400 Lbs. per side bearing (at 75° F after initial relaxation).
2. Meets requirements of M-948-77 when installed in cars with minimum carbody weight of 25,500 Lbs.
3. In normal operation lateral or longitudinal motion is not impeded by solid stops.
4. Must be installed in accordance with installation instructions for STUCKI ISB-12 resilient side bearings.
5. Roller and cage made from high carbon rolled steel (mill variations allowed).
6. Cage bottom flatness meets A.A.R. Spec. S-3013, Fig. 29-B
7. On stand alone cars and end trucks only on articulated cars it is recommended that rollers be oriented diagonally opposed across truck bolster. Refer to STUCKI drawing No. SA-A-04943-A.



SECTION A-A

A. Stucki Company				
Division of Hansen Inc.				
2600 Neville Road Pittsburgh, PA 15225			412-771-7300 www.stucki.com	
TITLE				
ISB-12 Side Bearing				
DRAWN	DATE	CONTROL	DRAWING NUMBER	REV
JJD	8/1/02	S	07188	001
	REVISED			