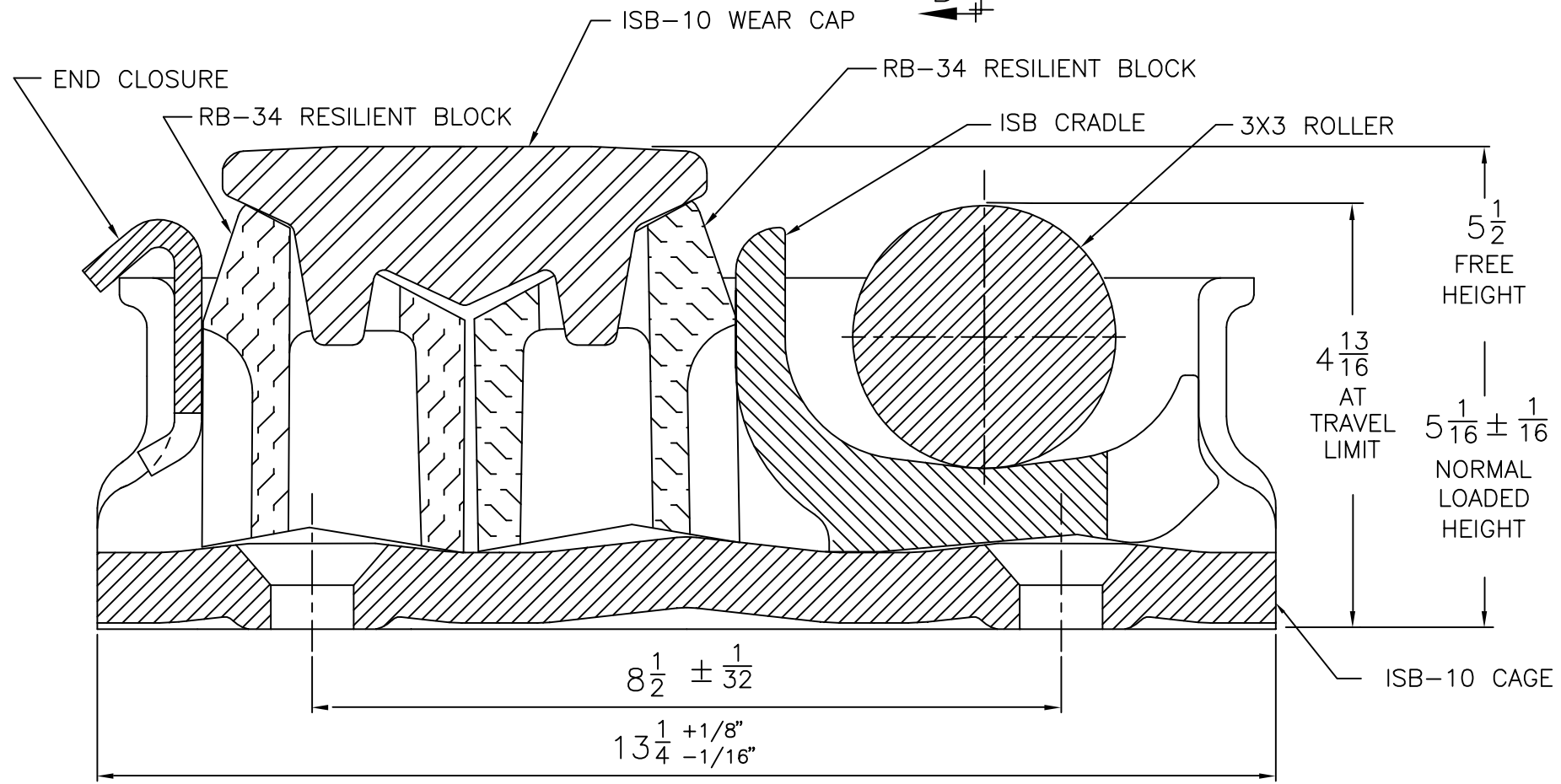
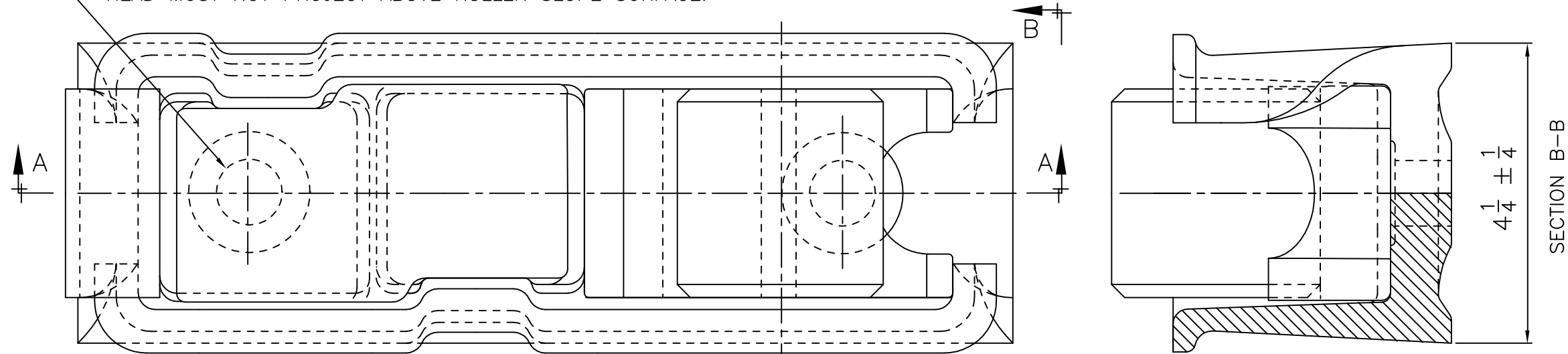


15/16 NOM. DIA. HOLES FOR 7/8 DIA. COUNTERSUNK FASTENER. MAXIMUM CLAMPING FORCE MUST NOT EXCEED 35,000 LBS. PER FASTENER. HEAD MUST NOT PROJECT ABOVE ROLLER SLOPE SURFACE.



NOTES:

1. FORCE AT 5 1/16 = 4,500 LBS. PER SIDE BEARING. (AT 75° F, AFTER INITIAL RELAXATION)
2. MEETS REQUIREMENTS OF M-948-77 WHEN INSTALLED IN CARS WITH MINIMUM CARBODY WT. 21,180 LBS.
3. IN NORMAL OPERATION, NEITHER LONGITUDINAL OR LATERAL MOTION IS IMPEDED BY SOLID STOPS.
4. LATERAL MOTION IS LIMITED TO 1/8 BY SOLID STOPS.
5. ON STAND ALONE CARS AND END TRUCKS ONLY ON ARTICULATED CARS, IT IS RECOMMENDED THAT ROLLERS BE ORIENTED DIAGONALLY OPPOSED ACROSS TRUCK BOLSTER. REFER TO STUCKI DRAWING NO. SA-A-04943-A

CAGE BOTTOM FLATNESS MEETS A.A.R. SPEC. S-3013, FIG. 29-B

ROLLER & CAGE
HIGH CARBON ROLLED STEEL
MILL VARIATIONS ALLOWED

* - MUST BE INSTALLED IN ACCORDANCE WITH, "INSTALLATION INSTRUCTION FOR STUCKI ISB-10 RESILIENT SIDE BEARINGS".

A. Stucki Company				
Division of Hansen Inc.				
2600 Neville Road Pittsburgh, PA 15225			412-771-7300 www.stucki.com	
TITLE ISB-10 Side Bearing				
DRAWN JJD	DATE 8/1/02	CONTROL S	DRAWING NUMBER 07187	REV 001